



Can't WAIT!

La campagne pour



Toronto Campus Case For Support

WE CAN'T WAIT!

**THE WORLD YOUR CHILDREN WILL INHERIT
WILL BE *DIFFERENT* FROM THE ONE WE GREW UP IN.
AND THEY NEED TO BE *PREPARED* FOR THAT WORLD.**

**WHEN TFS OPENED ITS DOORS,
THE CHALLENGES WERE *NATIONAL*.**

**TODAY, THEY ARE *GLOBAL*.
THEY ARE *BIGGER*, MORE *COMPLEX* AND
MORE *URGENT* THAN EVER BEFORE.**

**WE BELIEVE YOUR CHILDREN WILL BE
THE MINDS THAT *SOLVE* THE NEXT PANDEMIC,
IMAGINE NEW TREATMENTS TO FIGHT CANCER
AND THINK OF *BETTER WAYS* TO IMPROVE GLOBAL
HEALTH OUTCOMES.**

**WE BELIEVE YOUR CHILDREN WILL BE
THE HANDS THAT DESIGN MORE *LIVEABLE*,
GREENER AND *SMARTER* CITIES.**

**WE BELIEVE YOUR CHILDREN WILL BE THE HEARTS THAT INSPIRE
AND CREATE A MORE *CARING*, *EQUAL* AND *JUST* WORLD.**

WE BELIEVE IN YOUR CHILDREN — IN OUR TFS STUDENTS.

**THAT'S WHY WE CAN'T WAIT TO BUILD
THE *SPACES*, *RESOURCES* AND *LEARNING OPPORTUNITIES* THEY NEED
TODAY SO THEY CAN LEAD THEIR WORLD TOMORROW.**

WE CAN'T WAIT. BECAUSE THEY CAN'T WAIT!



An EXCEPTIONAL FUTURE



From Sunny Lowe, Chair, TFS Foundation Board, and MaryClaire Brooks, President, TFS Foundation

What makes a school exceptional?

The answer for us at the TFS Foundation is our community.

Because the foundation of our success is our community. You can see that on our campuses every day. We believe our students are the thoughtful hearts and curious minds that will lead a more equal, just and inventive world — just like our incredible alumni have done before. So, thank you for sharing your children with us.

Since we opened our doors, we have come together to make sure our students

have what they need to transform their own lives and our society. Our hard work and dedication to the school's vision has built the spaces, resources and opportunities that make TFS truly exceptional.

Now, it's time for us to come together again.

We will all help shape the future of TFS for our students and our corner of the world. Philanthropy built TFS and continues to help it evolve. Our school's strong tradition of giving has helped us grow and made us a leader in French-language education.

We all know the challenges facing society and our young people today — they are global, dynamic and fast-paced. We also know that in this competitive world, we need to equip our students differently than we did in the past. Our school is doing that through its strategic priorities, which the TFS Foundation supports. But we know there is more to do.

That's why we are thrilled to share our most ambitious fundraising campaign yet: "Can't Wait!" La campagne pour TFS.

"Can't Wait!" will raise \$40M to build the state-of-the-art classrooms, resources and learning opportunities our students need today to lead their world tomorrow.

Through this campaign, we will build new facilities at both campuses and grow our TFS Entrance Scholarship Program. These new facilities and resources align with the school's strategic priorities to help students thrive through science, technology, engineering, arts and mathematics (STEAM) education, as well as thriving with the planet and throughout their journey at TFS and beyond.

For the Toronto campus, this campaign will give the school's exceptional programming the world-class spaces it deserves. We will build the new Toronto campus L'Atelier, which will house a 350-seat auditorium and production booth, a new music wing with ensemble practice rooms, our new design and innovation wing, a beautiful green roof and new dedicated learning areas, including the 6 & 7 Hubs. At the heart of L'Atelier will be our new Wellness Centre — which will serve as a catalyst for our students' well-being and academic success.

These new spaces will give all our Toronto campus students new opportunities to study our environment and test new ideas to improve it. They will use design thinking to spark their creativity and build. They will learn the leadership arts to better share, analyze and discuss big ideas. And they will discover new passions, ways of learning and healthy habits that will grow their independence and lifelong resilience.

We haven't built in this way for more than 20 years. That's why we can't wait to get started with your help.

Together, we can construct this new environment that reflects our longstanding commitment to student success, cultivating individuals who reflect and citizens who act.

We "Can't Wait" for you — our community — to join us in this exciting campaign. Your contribution today is an investment in the next generation of leaders, innovators and changemakers. It's an investment in the future of TFS and, indeed, in the future we all share.

Thank you for believing in our mission and helping us shape this exceptional future for all of us.

Sunny Lowe
MaryClaire Brooks

In CONVERSATION



With Norman Gaudet
Head of School

Our Head of School, Norman Gaudet, is a passionate educator and visionary who has more than 20 years of leadership experience in independent schools around the globe.

Throughout his career, he has put children at the centre of education. At TFS, he helps our students confidently navigate our rapidly changing world by setting our school's strategic priorities to thrive through STEAM education, thrive with the planet, and thrive at TFS and beyond. M. Gaudet's vision ensures these priorities come together as a continuum of learning that supports our students' development in becoming fulfilled and successful global citizens. TFS students build on the critical competencies they learn through STEAM with lessons focused on growing their understanding of sustainability and environmental science. They learn about today's planetary challenges so they will be prepared to discover solutions for the known and unknown challenges of tomorrow. As they strengthen their skills and grow their relationship with the planet, they build their resilience and confidence in themselves and the future.

As TFS gets ready to break ground on L'Atelier at the Toronto campus, we sat down with M. Gaudet to talk about the important role these new spaces will play in further preparing students to thrive in our changing world.

***TFS Foundation:* You've acknowledged how fast our world is changing. So, what do students need to learn today to succeed tomorrow?**

Norman Gaudet: Today, everything is learnable, but you must know how to learn. You have to have the mental flexibility to pick up new skills and have the confidence to apply them. We know our kids can do that because of the way they learn.

By teaching the IB curriculum in French, our students learn differently and can apply that knowledge differently. Unfortunately, that isn't a given in schools anymore. But we make sure they have every opportunity to apply their knowledge across all subject areas. This approach ensures that TFS students build critical skills like design thinking, communication and creative problem-solving through STEAM learning, and they can then apply their knowledge, develop flexible thinking and gain confidence in their ability to learn. All of our new spaces support this approach.

***TFS:* So, how will these new spaces at TFS help students learn?**

NG: With these new spaces come new opportunities for learning and applying knowledge—particularly opportunities for students to present their ideas and grow their public speaking, communication and interpersonal skills. Each space is designed with maximum flexibility, allowing students and faculty to use them across disciplines for activities such as debating, delivering oral presentations, performing or collaborating. These learning experiences are foundational to the communication and leadership skills students need to succeed in today's world.

The new building also deepens our ability to help students learn by providing both direct and indirect academic and wellness supports, ensuring they have the confidence and sense of well-being that form the foundation for lifelong success. The new Wellness Centre, for instance, brings together academic and well-being resources in one central location. Other dedicated learning areas, such as the design and innovation wing, provide students with even more opportunities to immerse themselves in their subjects—effectively making the classroom a third teacher. And in the case of the 6 & 7 Hubs, we can help our youngest Senior School students build confidence and independence more gradually, so they feel prepared to thrive as they take on the greater self-reliance their learning journey requires in the upper grades.

Together, these spaces give our students the confidence and skills to achieve their best at TFS and beyond.

TFS: Where do creativity and design thinking fit into educational development?

NG: Anytime we can build opportunities for creative problem solving and design thinking into subjects, we're strengthening students' cognitive development because we're training them to think differently. They learn to be original. It's cliché to say, but children learn to "think outside the box," which is an absolutely necessary skill today. The child who learns by rote and gets 100 percent on every exam has the knowledge, but if they can't think outside the box — if they can't apply that knowledge in different and original ways — they aren't prepared for what's out in the world today.

We can't take for granted that children will naturally develop that "outside the box" thinking. That's why we put so much emphasis on finding more ways for our students to build their creative problem-solving and design thinking skills. These new spaces will help us grow those opportunities.

TFS: What does encouraging original thinking look like in the classroom?

NG: It's about giving students the space and opportunity to take risks and support the outcomes. Sometimes they'll succeed, and sometimes they won't. We need our students to be able to challenge conventions and even rewrite them because that's what's needed to be at the cutting edge of any industry. That's why I always tell kids in the orchestra to join the jazz band; they're going to practice creativity and learn to take more risks.

The new spaces, like the design and innovation wing, will give us more opportunities to practice creative risk-taking across disciplines. Students will use the new equipment to push past limits when it comes to applied mathematics, engineering and robotics. They'll use the flexible work areas to collaborate, run new experiments and find new ways to get hands-on and learn through prototyping. It's going to be so exciting to watch them use these spaces to connect even more learning between subject areas.

TFS: The arts are part of STEAM learning. As an educator, what skill developed through the arts stands out to you?

NG: The discipline to iterate. I always tell teachers to go and spend time in the drama or music departments. Those students work toward a performance as part of their evaluation, so they continually practice. They build confidence about showing their work because they've tried it many different ways and received a lot of feedback. And they're ready on the performance date because they have to be; there are no extensions.

Through these kinds of learning experiences, children learn how to pace themselves. They learn how to finish projects, and that's so valuable for building confidence and work ethic.

TFS: How is artificial intelligence (AI) changing the conversation about creativity and originality? And how is TFS adapting to the predominance of AI?

NG: Of course, AI brings up the issue of academic honesty. So, it's creating more opportunities for students to demonstrate their learning and strengthen their presentation and public speaking skills — everything from giving an oral report to creating a video essay. As I mentioned earlier, this is where the new spaces, like the auditorium, take these opportunities even further.

But AI is also shaping new ways of learning. There are great new programs that help students learn the tool. You can see the prompts that the students are asking the intelligence, how they're brainstorming with it and then working through the steps. So, there are a lot of different ways that we'll be integrating AI into digital learning, which these new spaces and tools we're investing in will help us expand upon.

DESIGN

Notes



Craig Goodman
Principal Architect, CS&P

Context is everything. Who we are, where we come from and the actions we take define how we grow and contribute to the world around us. Our context is, therefore, our blueprint.

Architect Craig Goodman believes the same is true when designing buildings. Goodman's CS&P Architecture is the award-winning firm behind our Toronto campus L'Atelier. The new four-storey addition will bring together the purpose-built 350-seat auditorium, expansive music wing, a design and innovation wing, dedicated learning areas such as our 6 & 7 Hubs and our new Wellness Centre.

Goodman and his team used research, historical context and creative problem-solving to achieve L'Atelier's contemporary design and open form. It's a design that honours the school's past and present, the prehistory of the site and a commitment to a sustainable future for current and future generations.

Goodman says that TFS started this project to fulfill practical needs while serving a bigger vision for the school and its community. "The project was more a notional idea about the

school," he said. "The school has been established for a long time and is still growing. So, this project was about TFS' next iteration."

The team worked with TFS to understand the school's breadth of programming and its strategic priorities to inform how the design would serve each.

"In early conversations," said Goodman, "we learned that the performing arts was a very strong element of the school's ethos, but it didn't really have a matching facility to express that."

The school's strong music and performing arts programs needed more space to better serve students and provide opportunities for integrated learning beyond the restrictions of the traditional classroom. The team also understood the school's need for every new space to serve multiple disciplines. For example, the new auditorium



needed to be a showcase for performances, but it also needed to be a highly flexible space to facilitate a range of curriculum programming like oral presentations, science exhibitions and more.

Goodman and the team ensured each space had maximum flexibility, could incorporate a mix of technology and equipment, and came with increased storage areas. Goodman designed the auditorium seating to be fully retractable to make sure students and faculty could use the space across the full range of programming and class activities. He even raised the auditorium off the ground level to create more learning spaces underneath.

Goodman and TFS also agreed the design should serve the sensitive ecosystem of the surrounding campus. The City of Toronto has designated the campus as a culturally important site because of its collection of heritage

buildings and proximity to the Don Valley ravine. That restricted the design's footprint, but it also inspired Goodman and his team to incorporate the natural environment and the site's pre-settler history.

"There are thousands of years of history on this site that are equally valuable to the designated heritage buildings," says Goodman. "So we tried to raise awareness of the Indigenous qualities of the site as we were respecting what we'll call the colonial history."

The firm and TFS worked with Indigenous advisers to add more perspectives. They landed on a design that respects the site's entire history.

"The design's strength doesn't just position those three original houses as little jewels," Goodman explains, "but it fits them into a longer context."

The structure acts as a "glazed porch" that wraps around the arrival and field levels of the campus to invite

the natural world indoors. Its large windows fill interiors with natural light and face the stunning Don Valley ravine. Its use of sustainable materials and building practices like updated energy systems ground the school in its natural environment and commitment to thrive with the planet.

Every detail of L'Atelier, down to the constellation sculptured lighting feature, which Goodman describes as "a reminder of what's in the sky," reflects the site's context and gives our school the chance to learn from and grow with it.

The new L'Atelier is a thoughtfully designed space that connects our students, programming and community to the natural world while creating a sustainable path to thrive alongside it.



Discover

L'ATELIER

The four-storey, 37,490 square foot L'Atelier is a bold architectural statement that connects the school's built environment with the natural world.

L'Atelier's design reflects a deep respect for the campus landscape and the full spectrum of its natural and human history. The large windows at the front and back of the building give students and faculty a direct view of the surrounding 26-acre Don Valley ravine while filling classrooms with natural light. The open interior also makes space for design elements symbolic of the land's pre-European history.

The word *atelier* translates into English as "the workshop," which is an appropriate name for our new space filled with purpose-built labs, studios and classrooms dedicated to spaces for your children to practice design thinking, creative problem solving and get hands-on with STEAM education.

L'Atelier will house our new 350-seat auditorium with a state-of-the-art production booth and fully retractable seating to maximize its flexibility and use. It will also host our new music wing, design and innovation wing, new dedicated learning areas, including the 6 & 7 Hubs and the new TFS Wellness Centre, where students can access a range of support services. This marquee space will unite and enrich all aspects of the TFS journey. That's why we can't wait for your help to get started!

Read on to learn more about the exciting new spaces your children will enjoy as part of the new TFS Toronto campus.

The Auditorium

The new auditorium will be a community, communication and cultural showcase for all TFS students — a space where ideas come together, creativity thrives and your children can make lifelong memories.

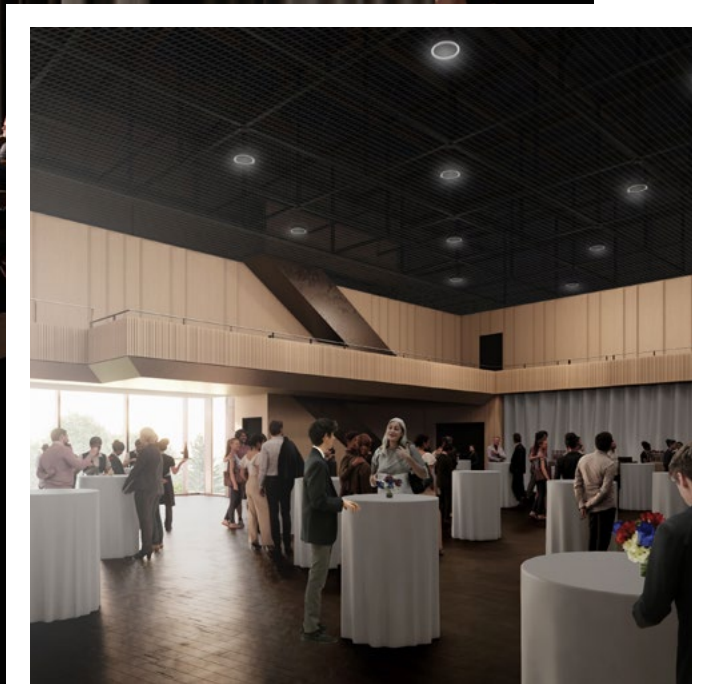
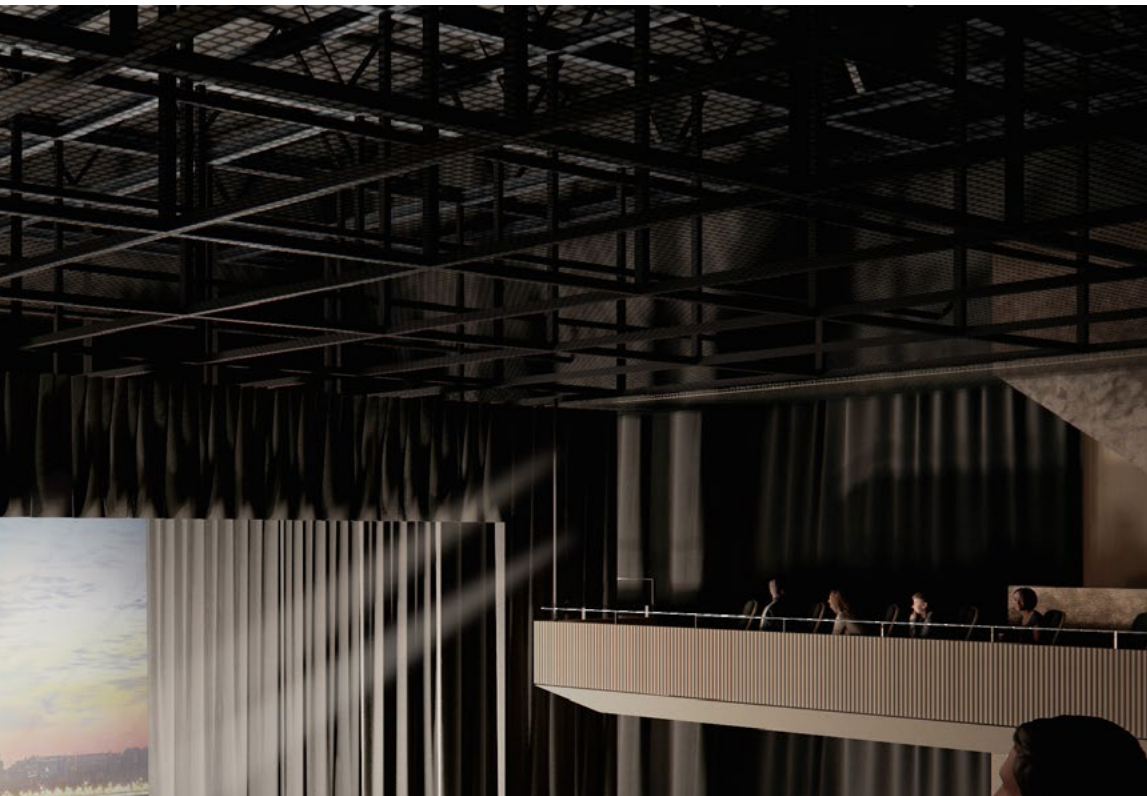
The auditorium's flexible design ensures the space can seamlessly adapt to every school occasion. The stage, professional lighting and tiered seating will elevate all events from drama, dance and music performances to assemblies, ceremonies and academic lectures. Young performers will take the stage and experience the thrill of a fully equipped theatrical setting. Meanwhile, aspiring designers can explore their craft in the state-of-the-art production booth to master sound, lighting and set design with industry-standard tools. And with a push of a button, the seating can retract completely and create an open and flexible space that TFS students and faculty can use for any class or activity.

TFS students from any club or classroom can transform the space to host special events, gallery showings, debates, presentations, guest lectures, conferences and more. Our community can also use the auditorium for meetings, celebrations, fundraisers and social events.

This versatile space will give our students a venue to show off their talents and strengthen their language, communication and presentation skills to enrich our school's culture.

We can't wait to build this premier auditorium — our new home for community and culture at TFS.





The Music Wing

The new TFS Music Wing will amplify the school's music program and inspire students to compose, perform and create with unbridled imagination.

The new music wing is a series of purpose-built ensemble spaces and individual practice rooms. Students will enjoy these new acoustically optimized rooms for music classes and co-curriculars, like our orchestra and jazz band ensembles. School productions can now feature our TFS students through an audio link between the music wing and auditorium that will allow school musicians to perform as a pit band for live performances.

Students can use the new, soundproof practice rooms to develop their craft, produce their own work or collaborate with others. The new space will also give students access to more storage to make it easier to transport instruments back and forth between classes and home.

We can't wait to build the new music wing so your children can explore, refine and share their talents boundlessly.



RUPERT PRICE
Sr. Music Teacher



“Music makes the world a better place. And as part of a band or ensemble at TFS, children from different levels and branches play across all ages, genders and cultures, breaking down different kinds of barriers and building relationships and ultimately a community and family. Through music, they’re learning to collaborate, to mentor, but also, as a byproduct, history, geography, culture, physics and mathematics.”

The 6 & 7 Hubs

L'Atelier expands our campus footprint, creating more space for all TFS students from Grade 6 and above to learn, explore and thrive. This includes the new 6 & 7 Hubs, purpose-built learning areas that give our youngest Senior School students a dedicated home base while keeping them connected to the shared amenities and common spaces that make entering the Senior School such an exciting milestone.

The 6 & 7 Hubs will help our students build confidence and resilience as they develop the independence and responsibility expected in the upper grades. This added support ensures students feel even more prepared to meet new challenges and take the next steps in their learning.

This area features a dedicated entrance that gives even easier access to new classrooms with expansive views of the Don Valley ravine. It will also house the Introductory to French Program Hub, supporting students at every stage of their French-language journey at TFS.



JEAN-BASTIEN URFELS
Principal, Senior School



“The beauty of the new 6 & 7 Hubs is that they will allow us to make the transition from Junior to Senior School even smoother for students and their families. Students will build independence and strengthen connections by making both the new and legacy Senior School spaces their own.”

BUILDING *in* CONNECTION



← Restoring What's Ours to Protect

Students partner with conservation experts to restore the Don Valley while practicing leadership and collaboration in helping biodiversity thrive.

A Place to Gather and Grow →

A green rooftop terrace invites open-air learning and social connection while capturing carbon and managing stormwater for a healthier TFS ecosystem.



↓ Stewards from the Start

Our youngest learners explore the ravine, practicing inquiry and learning Indigenous perspectives to spark lifelong curiosity and care for our planet.

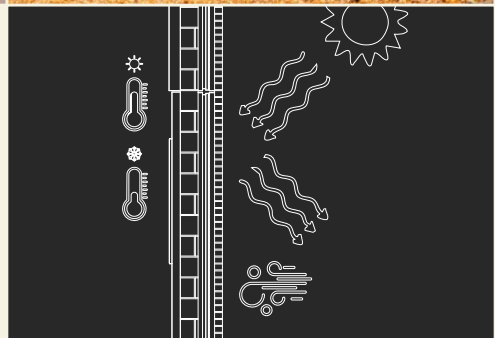
Materials with Meaning →

Warm, natural wood finishes echo the ravine's forest and reduce stress, sharpening focus to support our students' well-being and learning.



Built for a Greener Future →

Triple-glazed windows and low-carbon materials meet rigorous green and LEED standards to create bright, comfortable spaces with lower environmental impacts.



At TFS, our programs define our spaces, and our spaces define our learning. The Don Valley ravine, right in our backyard, has long been a place where TFS students explore, question and discover. It is a living classroom, a collaborator in research, and a teacher of history, resilience and care. Our campus renewal strengthens TFS' dialogue between nature and architecture. Classrooms

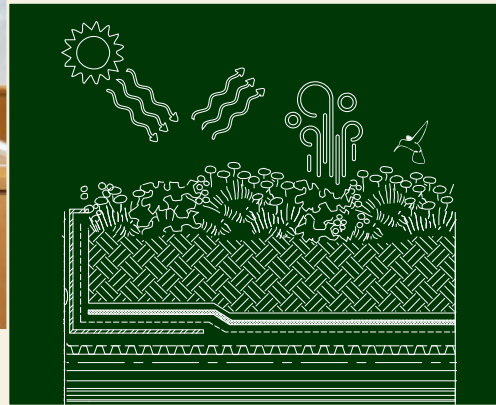
will open directly to the outdoors, gathering places will frame views of the ravine, and natural materials will root new spaces in the landscape's history and beauty. These choices matter for our students, as research shows that time spent in nature restores focus, lowers stress and anxiety and sparks curiosity. The new building extends those student benefits and creates environments

that support well-being, inspire learning and deepen our respect for the planet. We can't wait to build in connection with our planet. Grow what TFS students are already doing. And create new opportunities for curiosity, problem-solving and sustainability!



↓ **Designing for the Watershed**

Green roofs and stormwater systems filter and slow runoff, which protects the sensitive Don River below.



↑ **Sustainability on the Menu**

Kitchen staff and students collaborate on plant-forward, fair-trade menus that nurture health while reducing our environmental footprint for each meal.

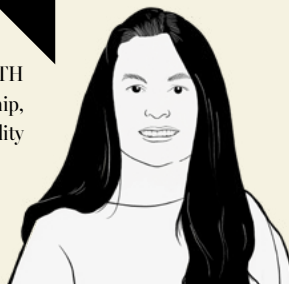


↑ **Making Energy Visible**

Real-time energy displays turn conservation into a daily lesson, helping students link personal choices to campus-wide sustainability.

“We’ve worked hard to ensure that our new space aligns with our commitment to thriving with the planet. Additionally, these spaces, with their intentional connection to the natural world, also foster wellness, which further supports our students’ mental health and learning outcomes.”

TAMARA SMITH
Director of Stewardship,
Service and Sustainability



↑ **Honouring Heritage, Embracing Place**

Classrooms and gathering spaces open to the ravine, linking the three heritage mansions with the land's 7,000-year-old story and our responsibility for its future.

A dedicated wing for

DESIGN THINKING

Technology is moving faster than ever before. Its advancement and new applications are changing how we learn, live and work. That's why we can't wait to build a design and innovation wing at our Toronto campus. Your children will get to be creative. Unleash their ideas. And build.



Design and Innovation Wing

The new TFS Design and Innovation Wing is a dynamic learning environment where innovation meets exploration. Students will build on the current STEAM curriculum using this flexible and purpose-built space specifically for design thinking and creative problem solving.

The space will have versatile workstations, extensive whiteboard surfaces and communal tables for collaboration and cross-disciplinary learning. Students will also put theory into practice with access to tools like 3D printers and laser cutters for hands-on experience in rapid prototyping.

The wing is more than a series of classrooms; it's a launchpad for applied science. Students from the Junior and Senior Schools will use the studios to immerse themselves in practical engineering, robotics and mathematics applications. They will prototype and test their ideas using design thinking and creative problem solving.

We've also designed the space to mirror competition settings for robotics. Our TFS robotics champions can now build, test and refine their robots in a regulation-sized environment with access to the industry tools and technologies they need to stay competitive.

Students will also use these spaces to expand their understanding of sustainability and environmental science. Lessons exploring the mechanical and natural world will come to life in this dedicated STEAM wing so students can think big and build.

“Our philanthropic journey at TFS evolved over time as our children started to take advantage of the many offerings at TFS. We quickly realized that it was only through the *generosity* of prior families that these offerings existed. In the spirit of paying it forward, we are thrilled to help. It’s time for philanthropy to take centre stage.”



STEPHANIE THOMPSON
Director, TFS Foundation Board



The Wellness Centre

None of us can thrive without feeling good about ourselves — from our physical and mental health to our ability to navigate big feelings and life's transitions. The same is true for our students. That's why we are proud to build the new Wellness Centre at the heart of our campus. The Centre will help students develop healthy habits, emotional resilience and academic success.

The new TFS Wellness Centre will bring together experts and practitioners to deliver a complete model of care that promotes cognitive, psychological, social and physical

well-being among students and staff. The Centre will be a safe place where students and families can access confidential guidance from our team of registered health professionals so they can develop the skills and tools to navigate any health or wellness challenges.

The new Centre brings together a collection of teaching, clinic and triage rooms for students and staff to access a full spectrum of supports — everything from nursing services to mental health supports. But with the added space we can also expand our programming and bring more students into the Centre for proactive learning sessions. For example, our

wellness team can bring students from the Junior School together to practice emotional regulation through meditation, or nursing staff could use the added space to run sessions on nutrition and building healthy habits for students in our Senior School. All are possible with the added space.

The new Centre and its added space and resources reinforce our commitment to serving the whole child through their school journey. That's why we can't wait to build the new Wellness Centre so all students can continue to thrive at TFS and beyond.

ANSWERS

The Auditorium and Music Wing

Q:
How will these new spaces benefit students across different age groups and interests?

With more space comes more opportunities to prepare our students for the future. These state-of-the-art spaces are designed to develop essential skills like public speaking, self-expression and confidence, design thinking and effective communication — competencies that are critical for success in any field. The auditorium will give us new opportunities for collaboration across disciplines. Students of all ages and interests will use this versatile space to practice sharing their knowledge and ideas in original and impactful ways. Along with creative expression, the auditorium will provide students with more opportunities to express themselves clearly, confidently and in front of an audience.

Q:
What types of events and programming will happen in the new auditorium?

We worked closely with architects to make sure the auditorium could support a wide variety of events, classes, clubs and gatherings for our entire school community.

The 350-seat auditorium will allow us to host more of our community for school assemblies, performances and unique presentations. Its retractable seating also lets us transform the space into an open venue for social gatherings, board and committee meetings, staff and faculty sessions and more. Clubs and classrooms can also reserve the space for special events or activities.

Q:
What technology comes with the auditorium?

We've outfitted the new spaces with the industry-level equipment our students need to accelerate their learning across design and theatrical production.

The auditorium features a complete lighting system, grid and a professional-grade production booth where students can build lighting and sound designs with professional programming boards. We've also connected the auditorium's sound system to the new music studio so our orchestra can join in productions as a live pit band.

The Design and Innovation Wing

Q:
How will the new wing benefit students across age groups and interests?

The design and innovation wing will be a learning hub where students can dive into engineering, robotics and applied mathematics. Junior and Senior School students will build on the TFS STEAM curriculum by bringing theory into practice. Our younger grades will use this space to apply STEAM to project-driven lessons, such as learning code. Our older students will build on their application of science and math by using design thinking to prototype and refine their ideas. Our robotics teams can also use the new competition-sized space to build and test their winning creations.

The Wellness Centre and 6 & 7 Hubs

Q:
How does the Wellness Centre fit into the school's overall approach to student health and well-being?

TFS takes a proactive approach to our students' health and well-being. That means we have resources for when challenges arise and programming that helps students learn healthy habits to build their resilience and manage challenges with agency and confidence. This approach to health and well-being aligns with our strategic priority to help students thrive at TFS and beyond. The new Wellness Centre brings all our health and well-being resources together in a central location. Students can access our full team of registered health professionals through the Centre. The added space also allows our team to expand programming for students, their families, staff and faculty.

Q:
What role do the 6 & 7 Hubs play in supporting student wellness and growth at TFS?

The move from Junior to Senior School is a big step for students and often a time of excitement and nerves. The new 6 & 7 Hubs are designed to smooth and support that transition, ensuring every student has the chance to thrive at TFS. These spaces give our younger Senior School students both belonging and independence as they take their first steps into a stage of learning where self-reliance is key. The hubs offer a close-knit environment where students can grow in confidence among peers their own age, while still connected to the energy and opportunities of the wider Senior School. Together with the new Wellness Centre, the 6 & 7 Hubs strengthen our ability to support your child's well-being and academic success as they start their journey at the Senior School.

Timelines and construction

Q:
When will the Toronto campus construction start and end?

Our goal is to start construction at the Toronto campus in the summer of 2026. We anticipate opening L'Atelier in 2029.

Q:
How will construction impact regular school activities?

We're pleased that the construction will have a limited impact on most school activities. This project adds to our footprint, so the construction won't remove classrooms or spaces that force changes in student programming. Construction will primarily take place at the arrivals level of the campus, which helps us protect the soccer field and student play spaces at the back of the school. Students will still enjoy recess and outdoor activities throughout the construction.

Q:
Will the school change its parking or drop-off and pick-up locations during the construction?

Unfortunately, parking may be affected during construction. TFS is currently developing a plan with the construction manager to have the least amount of disruption during drop-off and pick-ups.

There will be no changes to parking for La p'tite école or Senior School. We are working on a plan to maintain the Junior School drop-offs with minimal changes.

Q:
How does TFS plan to minimize classroom disruption during construction?

Our faculty and staff have worked together to create a plan that minimizes disruption and ensures students' safety during construction. Junior School students will continue to enjoy recess in the back playground, although we will block some parts of the front garden for construction. Faculty and staff will continue yard monitoring during recess to ensure students stay safe in areas close to the construction. Senior and Junior School administrations have also worked together to ensure students from both branches can share the field during construction. We are working with the construction manager to limit the most disruptive construction work to after-school hours, weekends and breaks. Students and faculty will hear construction activity in classrooms closest to the site during the school year, but developers have assured us that dust will not be an issue. We ask for everyone's patience and promise to minimize disruption wherever possible.

Financial details

Q:
Why does TFS need donations for this project?

We rely on donations from our community to make this and other projects possible, as we dedicate tuition fees to the school's operational needs. That means essentials like faculty salaries and facility upkeep. Significant new developments like this are funded through a combination of financing, planned operational surpluses and donations. Through philanthropic support, we ensure that tuition is not impacted due to this extraordinary investment in the future of our school.

Q:
Will tuition be affected by this capital project?

No. This capital project does not impact our tuition fees.

Q:
Is there a recommended donation amount?

"Can't Wait!" is a transformational campaign for TFS. We haven't expanded our school's footprint in more than 20

years. So, we're excited to make these builds happen with your help. We ask you to consider making a donation that's personally meaningful to you and your family.

We appreciate all gifts from our community and gratefully recognize significant commitments that help our school thrive.

To learn how you can be part of this campaign, including recognition opportunities, please contact the TFS Foundation at foundation@tfs.ca.

Q:
Do donations qualify for a tax receipt?

Yes. All donations will receive an official charitable tax receipt for income tax purposes.

Q:
Can we spread out our donation over time? Or do we need to contribute a lump sum?

You can contribute to TFS as a pledge over several years or through a one-time donation. Our team is happy to work with you and your family to find out which option serves you best.

For more information about donating, please contact the TFS Foundation at foundation@tfs.ca.

Donor recognition and updates

Q:
How will the school recognize Toronto campus donors?

We can thank donors through title naming of specific spaces within the building and other recognition opportunities. Donations can also qualify you and your family to join Le cercle des philanthropes. To learn more about our recognition opportunities, please contact the TFS Foundation at foundation@tfs.ca.

Q:
How will the TFS Foundation keep donors informed about the project's progress?

The TFS Foundation will send campaign updates to all donors. Donors who contribute \$25,000 or more will receive personalized reports from the TFS Foundation. Reports will reflect the progress of your supported projects or the impact made by your giving, such as contributions to our TFS Entrance Scholarship Program.

Other considerations

Q:
How was sustainability considered in the project?

CS&P Architecture factored in our school's commitment to sustainability in all decisions. The plan replaces gas energy with greener electricity where possible, helping us lessen our carbon footprint. Architects also included more north-facing windows and used overhangs on south-facing glazings to help with temperature control. Our new green roof will also create more shade while helping with stormwater drainage.

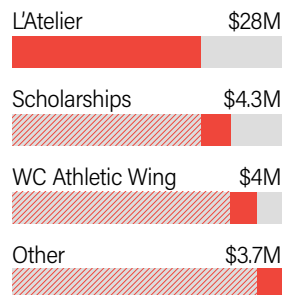
Plans on each campus meet the City of Toronto's green standard and, in some areas, exceed requirements to ensure the school remains in compliance as standards become more aggressive.

Q:
Can donations be made in honour of alumni, former teachers, or current students?

Yes. The TFS Foundation team will happily work with you and your family to honour anyone of your choosing appropriately with a pledge to the school.

To learn more about our recognition opportunities for you and your family, please contact the TFS Foundation at foundation@tfs.ca.

Q:
How is the \$40M being allocated?



“We believe in your children – our TFS students – and in their ability to lead tomorrow’s world as thoughtful, informed and globally minded citizens. Their promise drives everything we do. TFS delivers a world-class education and this campaign ensures that our spaces and resources will grow with your children’s ambitions. Together, we can continue the exceptional legacy we share by supporting the opportunities our students need today for the world we all need tomorrow.”

NORMAN GAUDET
Head of School



JOIN *Us!*

The TFS that helps your children thrive today exists thanks to the generosity of past supporters, just like you.

Now, it's your turn to invest in the future — empowering the next generation of individuals who reflect and citizens who act.

To learn more about how you can support our future through "*Can't Wait!*", please contact the TFS Foundation at foundation@tfs.ca



Can't WAIT!

La campagne pour 

Our kids are facing a world that is getting more complex by the day – but a world that is also alive to more opportunities than ever before.

Your generosity will help us build the opportunities your children need today for the world we all need tomorrow.

We can't wait,
because they can't wait,
because the world can't wait for your kids.



TORONTO CAMPUS

306 Lawrence Avenue East, Toronto, Ontario M4N 1T7 Canada 416-484-6533

WEST CAMPUS

1293 Meredith Avenue, Mississauga, Ontario L5E 2E6 Canada 905-278-7243